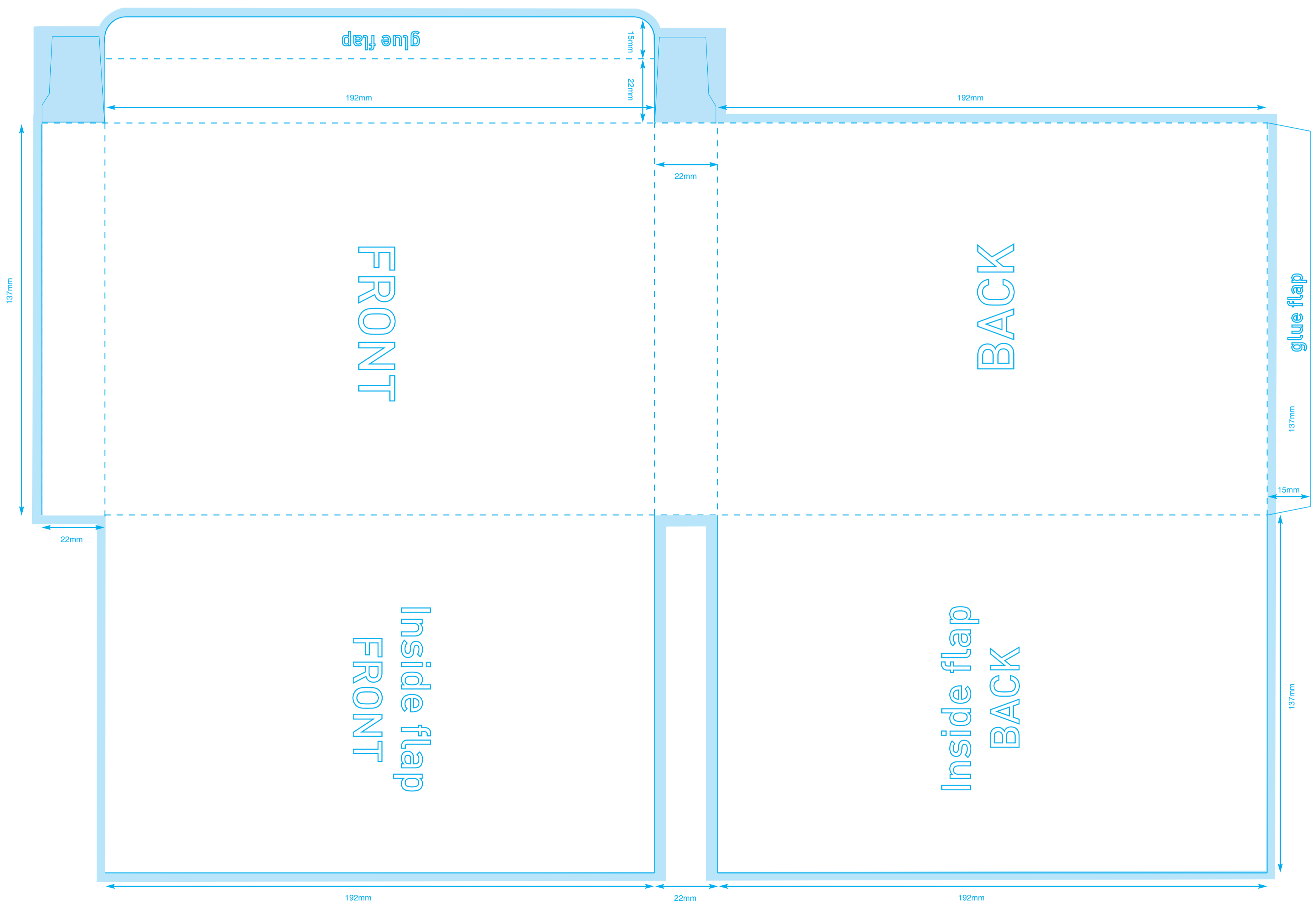
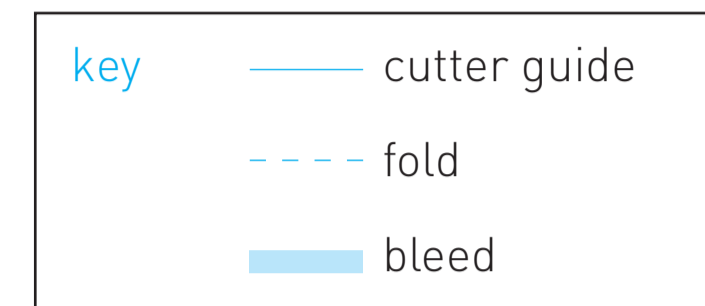


# Slipcase to hold 3 slimline dvd cases (digital)

print type | **digital**

folded size | **137mm x 192mm X 22mm**



## notes

- Artwork can be accepted in **.EPS**, **.JPG** (use maximum quality compression), **.TIF**, **.PDF** (print-ready), **.QXD** (QuarkXpress), **.INDD** (InDesign), **.PSD** (Photoshop), **.AI** (Illustrator) formats
- All linked images must be embedded or included
- All must fonts are included, embedded or outlined.
- Where possible, leave vector artwork and fonts unrastrized as this often produces a "cleaner" print.
- All Pantone® colours should be clearly indicated.
- Pixel-based files should be supplied at a minimum of 300dpi and saved as CMYK image mode. Any files supplied in a lower resolution or different colour format (ie RGB) may not print correctly.
- Please allow for a 3mm bleed around the edge of your artwork and place all text or important imagery at least 2mm from the document edge.
- Do not flatten or merge the template with your artwork as we will not be able remove it.
- Finished artwork files under 5MB can be emailed to your Sales Manager or directly to our Artwork Team.
- If your files are over 5Mb in size, please email for instructions on how to upload the files to our FTP site.

alpha duplication artwork team

telephone | **01494 560694**  
email | **artwork@alpha-duplication.com**